



SINCE



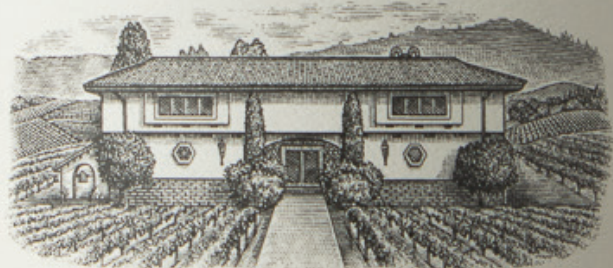
1932

# PARDUCCI

## 2020 Small Lot Zinfandel

MENDOCINO COUNTY

Ripe cherry, currant,  
and hints of cinnamon  
and leather on the nose  
make way to plush red fruit  
flavors married with a kiss  
of vanilla and oak spice.



*Deep Roots. Legendary Wines.*

SMALL LOT  
ZINFANDEL  
MENDOCINO COUNTY



LEARN MORE

